

Log Home CHARM

As soon as the red door swings open, you get your first clue that this home is a far cry from the old rustic summer cabins associated with log homes. This gracious structure is suitable for a full-time residence. Working very closely with Alta Log Homes, Woman's Day Specials constructed and then furnished it as an idea source for those who want to lend a touch of sophistication to the comfortable mood and charm of country.



DESIGN: PAMELA LANDAU PHOTOGRAPHS: MARTIN JACOBS

Log Home CHARM

In a log home, all-wood floors, ceilings and walls can present a real decorating challenge: To break them up we used strong design statements, varied textures and bold colors.

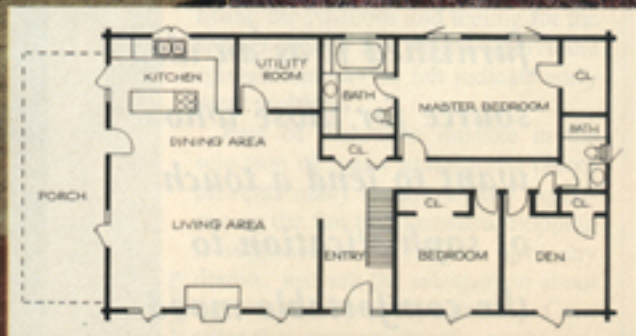
Take the entry, for instance. Both the antique quilt and the striped rag runner have plenty of graphic power. Painted wood furniture adds to the visual punch. In the largest room, a gathering place with areas for relaxing, dining and cooking, the palette is sophisticated. Subtle paisley upholstery and a sisal rug lend a feeling of ease.

ALL WOOD FLOORING: BRUCE ALL UPHOLSTERED FURNITURE: BRIDGEFORD ALL PAINTED FURNITURE: HABERSHAM PLANTATION FIREPLACE INSERT: PREWAY FIREPLACE STONE VENEER: SCHUYLKILL STONE INC. FLOOR PLAN: ALICE UCHIYAMA



Antique farm implements decorate the fireplace mantel, right. A bold quilt brightens the entryway, inset.

SEE SHOPPING PAGES FOR DETAILS





Log Home CHARM

Designer Pamela Landau created intimate areas within the larger space, such as the work or study nook defined by a charming Shaker desk. Stocked with treasured mementos, the nook provides a quiet corner within easy range of the hearth. The use of painted wood furniture is a theme continued throughout the house.

The dining area, given focus by a polished brass chandelier, is close enough to the kitchen to be convenient and near enough to the fireplace to be cozy. It's easy to imagine a convivial group lingering over dessert in the comfortable, hoop-back Windsor chairs drawn around a circular table, with coffee refills nearby in the kitchen. Distinctive table settings—a mix of modern and antique pieces—are displayed in the Welsh hutch.

Setting off the kitchen area is a ceramic tile floor custom-designed by Pam to imitate an accent rug. The island's tile countertop, which echoes the design, incorporates dusty shades that help link this area to the living room.



A rug pattern inspired the ceramic tile floor, above. The same design is used on the counter.



The clean lines of a Shaker desk, above top, come alive in blue. Thanks to an open plan, the dining area, above bottom, is only steps away from the kitchen. A Welsh hutch, right, can double as a serving area.

CEILING FIXTURES: FORECAST LIGHTING CERAMIC TILE: AMERICAN OLEAN ALL DOORS: MORGAN PRODUCTS ALL BRASS LOOKS: SCHLAUSE



Log Home Home CHARM

The kitchen is designed to be an efficient work space, and one where the cook can chat with guests while preparing foods at the center island. To conserve valuable counter space, good use has been made of the cabinetry: a toaster oven, coffee-maker and can opener are mounted under it.

Light-oak cabinetry was chosen to harmonize with the color of the wooden walls, and laminate in a soft shade of chamois sustains the natural palette on the countertops. Almond appliances also carry out the neutral color scheme, providing the perfect foil for a collection of bright accessories and unusual accents. The high/low range features a microwave on top.

SEE SHOPPING PAGES FOR DETAILS



Undercounter outlets, above, make it easy for cooks to use their favorite small appliances on the island. Light-oak cabinets, right, blend easily with the log walls.

MAJOR APPLIANCES: HOTPOINT
SMALL APPLIANCES: BLACK & DECKER
CABINETS: MERILLAT
PLASTIC LAMINATE: WILSONART
DOUBLE SINK & FAUCET: AMERICAN STANDARD





Log Home Home CHARM

The master bedroom, located away from the open living area, is a peaceful retreat with romantic overtones. Both pickled-wood and white walls have a lightening effect in the space. A pencil-post bed, open and architectural in feeling, adds to the airy look.

The bedding is a sumptuous mix of pattern and print, made more inviting with piles of pillows, a plump comforter and an antique quilt. In place of a traditional bureau, a pantry cabinet provides storage. Graceful Queen Anne armchairs have seats covered in the same sheet pattern used on the bed, and simple curtains are fashioned from sheets as well. Delicate touches—covered hat boxes, botanical prints, bits of lace—combine to give the room a spirit of the most artful gentility.



Soft colors, floral prints and pickled walls give the master bedroom, right, romantic appeal. Antique accessories decorate the dressing table, above, and the cabinet, inset.

ALL PAINT: FULLER O BRIEN ALL BED LINEN, WINDOW SHADE, UPHOLSTERY FABRIC FIBER CONTENT: CELANESE FORTREL ALL CARPETS: KARASTAN





Log Home CHARM

A second bedroom, adapted for a girl's room, shares the same pickled-wood treatment and cool gray carpeting as the master bedroom. The focal point is a painted sweetheart bed, which takes its name from the cutout on the headboard. A soft canopy effect is created by a simple drape of lacy fabric anchored above the headboard. Lace-trimmed sheets and shams continue the feminine theme.

Toys and dolls, many of them heirlooms, are showcased in and on a miniature country cabinet with Chippendale detailing.



Any little girl would love waking up in this bed, right, covered with a quilt and surrounded by teddies. The chest, above, is perfect for pint-size playthings.

SEE SHOPPING PAGES FOR DETAILS



ALL WINDOW SHADES: HUNTER DOUGLAS LIGHTING PLAN, BULBS: GENERAL ELECTRIC



Log Home CHARM

What could also serve as a third bedroom has been decorated as a den. Done entirely in log walls finished with a light-oak stain, it's cozy and inviting.

Bold strokes of color give the room its distinct personality. A brick-red armoire houses the entertainment center; a wing chair combines tones of brown, rust and beige in its pattern. The loveseat's upholstery mimics spongewear for an updated variation on a classic country theme. On the traditional drop-leaf table, a modern halogen lamp looks right at home.

ALL FLOOR & TABLE LAMPS: PAUL HANSON TRACK LIGHTING: HALO



Rich colors and a mix of pattern bring drama to the den, right. A nubby-tweed carpet gives warmth and texture. The quilt, above, acquires the look of abstract art.



Log Home CHARM

One nod to tradition in this plan is the expansive porch, which runs the length of one side of the home, taking advantage of a postcard view of the Catskill Mountains. In warm weather, it's an ideal spot for casual dining, relaxing or entertaining. The living area is easily reached through French doors that open onto the porch.

Rustic furniture, largely hand-made, relates beautifully to the log exterior, which has been treated with a semitransparent gray stain.

Once acquainted with this new-style log home, it's easy to understand why more people are thinking of this kind of dwelling for year-round, all-weather residences. Old-style cabins, rustic in design, generally had the bark left on their exteriors, and many families felt the look was out of place for a permanent residence. In these new homes, appropriate for any setting, logs have been machine or smooth-finished. They can be treated with a variety of preservatives and stains (as this one was) or left to age and weather naturally.

Using machine-finished logs, as Alta Log Homes does, also yields several other advantages. Since the logs are more uniform than hand-cut, rough-hewn logs, it is possible to achieve a more energy-efficient, low-maintenance home. One of the original objections to traditional cabins was the presence of interior log ledges that retained dust. These logs are softly rounded to eliminate this problem.

Ease of care was a key factor in the selection of interior furnishings. Since the atmosphere created by the home itself is one of comfort and relaxed living, it stands to reason that upholstery, bedding and floor coverings should be espe-

cially easy to clean and maintain.

For bedding and domestics, we chose blended fabrics of polyester and cotton for their washability, durability and no-iron qualities. The same blend of fibers, fashioned for upholstery, is known for its strength, long wear and resistance to abrasion.

In carpeting, stain resistance was a major criterion. We chose nylon with a stain resister to take the worry out of caring for wall-to-wall carpets.

The decorating challenge in an all-wood home is to make the many expanses of wood appealing, not repetitious. Toward this end, designer Pam Landau used many pieces of painted wood furniture to break up the visual texture. "You want to avoid the feeling of logs, logs everywhere," she explains. "Painted wood in pretty colors, overstuffed furniture, and dramatic quilts and accessories add the volume and interest you need to relieve the similarity of surfaces."

Another idea that Pam used to good advantage is the impact achieved by playing against type. "At one time, log homes had a certain connotation: strictly country," she says. "We took a fresh approach to this home, so it's more sophisticated, more updated. It's light and open, with simple accordion shades to let in lots of light. Plus, we've used an abundance of plants to capitalize on the greenhouse effect of the high ceilings and skylights."

These days, it seems that log-home charm no longer grows out of a strict interpretation of country living. Instead, a log home presents an open invitation to combine country ease with modern luxury and sophistication.

—Jamie Laughridge

A sun porch, shaded by the eaves, provides a comfortable spot for taking in the view. Sturdy log furniture, reminiscent of grand turn-of-the-century estates in the Adirondacks, completes the scene.



RUSTIC FURNITURE: GRANT'S

